

mtsilutheran@mtsilutheran.org

411 NE 8th Street  
North Bend, WA 98045

425-888-1322



Mount Si Lutheran Church

*To Serve  
To Reach Out  
To Grow In Grace*

# GOODNEWSletter

JUNE 2025



## Pastor's Note...

Grace and peace to you from God our Father and our Lord and Savior, Jesus the Christ.

After a sobering text conversation with a dear friend and after a dinner gathering with others I have the honor to call friends, I realized how deeply these people I love and care for are hurting. As their friend, I will always try to support them and encourage them and stand with them - but beyond that - What else can I do? This was the question on my heart as I attended our Synod Assembly on May 17<sup>th</sup> and 18<sup>th</sup> and it was at the assembly that I felt a tug of the Holy Spirit to share with you one of the memorials passed by the assembly and why I, personally, feel it is worthy of our prayerful attention.

I understand there are those who will disagree with me - that's ok. This isn't meant to draw a line in the sand and suggest that if you disagree we can't worship together or be in community with one another. However, I have found I cannot ignore this tug of the Holy Spirit any longer. Here is the main "resolve" of the memorial, "be it resolved that the ELCA be encouraged to speak out against harmful policies and language towards transgender, nonbinary, gender expansive, two-spirit, and genderqueer people..." You can read the full text of the memorial on the Synod Website. After the memorial was read the assembly of 350+ representatives from across the synod had a chance to speak in favor or against the memorial - the memorial passed unanimously as far as I could tell from the

sea of green cards in the air.

The memorial now goes to the Churchwide Assembly of the ELCA meeting this summer for adoption or not - it will be up to the 800+ voting members from across the U.S.

Why do I bring up such a controversial topic? Simply put, I'm watching my friends, people I love, who happen to be transgender, struggle to figure out if they are safe in the country they care for. I'm watching as friends closely linked to supporting young transgender people see nearly weekly suicides after recent policies and increased aggression and hate speech from the people they live and work around. I've known these people since I was a child. I watched as each one was driven from their church communities because of who they are.

As a young person I began to pray to God, "may my heart be broken with the things that break the heart of God" and I've never stopped praying it - and my heart is breaking.

The Spirit is encouraging me to speak for the sacred humanity of these beloved children of God who are crying out for mercy. I know I am called to love my neighbor and right now that looks like listening to them and sharing this Memorial with you all. I'll go back to asking myself, "what else can I do?" and I'll continue to pray and listen to the Holy Spirit and I ask that you consider praying too - May the Spirit speak to us clearly. Amen.

### In this newsletter you will find:

Special Events  
In June & July

Sharing Space  
with our  
Neighbors

MSLC Council  
Report  
MSLC Finance  
Update

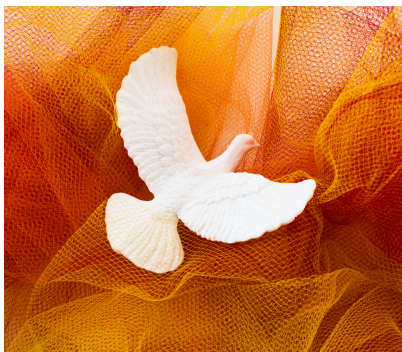
Sunday Readings  
& Weekday  
Education  
Opportunities

June Birthdays  
and Anniversaries

Other News!

---

## Special Events in June & July



### Pentecost, Sundaes Sunday & Garden Blessing - June 8

Make your calendars and get ready for a Spirit filled day of worship, fellowship and blessing.

You are invited to wear red to worship on June 8<sup>th</sup> as a symbol of the Holy Spirit. Following worship we will enjoy an ice cream sundae bar. After a time of fellowship we'll bless the garden.



### Summer Water Worship Series - July 6-August 10

In preparation for VBS, Pr. Mark and Pr. Krista met to develop a six week worship & ed. series focused on water stories in the Bible. Let's dive into God's Water & the Word!



### Special Offering for Backpack Ministry - June 22

During Worship on June 22<sup>nd</sup> we'll hold a special offering to support the backpack and school supply ministry of the church.

Erica and Janey are our amazing leaders who help coordinate this ministry each year. Last year over 300 K-12<sup>th</sup> grade students received supplies!



### VBS - Splish, Splash! God's Water & the Word July 14-18

Register Now for VBS!  
July 14-18 - Mon-Fri 9-12pm  
Go to: [www.elfpnw/events](http://www.elfpnw/events)  
Want to help?  
Volunteer and Snack Sign-ups will appear in early June!



### Tiny House Build! June 23-July 3

The Eastside Lutheran Fellowship Team is leading a Tiny House build at Mt Si Lutheran again this summer. June 23-July 3.

Find out more at [www.elfpnw.org/tinyhouse](http://www.elfpnw.org/tinyhouse)

Check out the snack sign-up sheet to help feed our volunteers.



### MSLC Outdoor Worship & Picnic - July 20 - 10:00am

Let's enjoy the outdoors!  
We will gather at **EJ Roberts Park** on Sun. July 20 at 10am for worship, fellowship, food and games!

---

# SHARING SPACE WITH OUR NEIGHBORS

## DAUGHTERS OF NORWAY

The **Daughters of Norway** Lodge was officially welcomed by their national organization on Sunday, May 18. The ceremony was beautiful and a wonderful feature article about the lodge and Mt Si Lutheran appeared in Living Snoqualmie on May 21<sup>st</sup>. A link to the article is on our Facebook page.

Their next meeting is **Sat. June 14th**



## RED CROSS BLOOD DRIVE

On May 20<sup>th</sup> seventeen volunteers donated their blood to the American Red Cross. They greatly appreciate use of the fellowship hall. Thank you to Rick, Jack and Ed who helped this month.



## MSLC Council Report

The council met following worship on Sunday, May 18. Lisa Sampson was our Secretary for this meeting and Inge provided our devotion. Pastor led us in a review of our mission (to serve, reach out and grow in grace). Jeff led us in a review of the budget. Each team is taking care to watch the dollars they are spending. We reviewed a decision made in January to put a \$10,000 estate gift towards the parsonage bathroom repair costs. There is a plan to launch a capital campaign in 2025 to help cover the costs of several projects at the parsonage and church buildings. Depending on how much we raise, the \$10,000 may be freed up for other uses. The council has chosen to keep the funds in checking for now until more details are available. The Stewardship Team shared plans to move forward with conversations with the ELC regarding a shared bookkeeper and shared financial software. Thanks to Tom C. and Jeff K. who are working on this opportunity. The council also affirmed a plan to share sensitive information to the congregation on June 1 - first verbally to those present in worship and then by letter those members who were not present. Respectfully Submitted, Pastor Krista Johnson

## RWANDA MISSION TEAM

Please pray for the team heading to Rwanda at the end of May. Peggy Halferty from Mt Si is going along with folks from Our Savior and Sammamish Hills. They will serve alongside leaders at Love with Action Ministry.

## MSLC Finance Update

To meet our projected annual budget, our General Offering income **goal is \$16,000/mo.**

Income from Jan-April:  
\$62,385  
Expenses for Jan-April:  
\$62,781  
Net Loss Jan-April:  
-\$397

## Synod Assembly Update



Bishop Shelley Bryan-Wee was re-elected for a second six year term. After her second term she will step down as Bishop.

Resolutions and memorials were adapted and passed by the assembly. We also approved a budget and voted on representatives to serve on various teams and the Synod Council. The full recap can be found here: [Synod Assembly Re-cap](#)

Supporting one another in faith.....



## Sunday Readings & Weekday Education Opportunities

### JUNE SUNDAY LESSONS

#### June 1

First Lesson: Psalm 97

Gospel Lesson: Galatians 3:1-9, 23-29

#### June 8

First Lesson: Galatians 4:1-7; 5:16-26

Gospel Lesson: Acts 2:1-21

#### June 15

First Lesson: Psalm 8

Gospel Lesson: Romans 5:1-5

#### June 22

First Lesson: Psalm 42 & 43

Gospel Lesson: Hebrews 11

#### June 29

First Lesson: Psalm 23

Gospel Lesson: Hebrews 13:1-17

### EDUCATION OPPORTUNITIES IN JUNE

**Men's Bible Study** - Saturdays, 9am @ Little Si Restaurant.

**Women's Bible Study** - is on their seasonal break. They will resume their study of Luke in the Fall.

**Sunday after Worship** - on break until July.

**VBS - Coming soon! July 14-18, 9-12pm**



Darlene Lockwood 2nd

Inge Burnside 9th

Paige Lee 10th

John Haycox 15th

Emma Imsland 20th

Julie Imsland 25th

Susan Schuba 30th

Megan Stone 30th



Joe & Denise Stone 14th

### Flower Chart Sign-ups

**Please consider signing up to bring flowers for our altar on Sunday morning.**

This can be in honor or memory of a loved one or event in your life or just because you enjoy flowers!

The flower chart is in the Fellowship Hall hallway. Thank you for your offering!

---

## Let's Work Together!

**We need your help to keep our buildings clean** - Leslie Hatling has agreed to coordinate volunteers to clean the church buildings each week. She is creating a check list that will be posted in each area that needs cleaning (Fellowship Hall, Offices, Luther's Lounge, Sanctuary, Bathrooms). If you see something on the list that needs to be done, please feel empowered to do so and then checkoff when the task is complete with your initials & the date/time you completed the task.

If you are interested in helping, please let Leslie know. You don't have to commit to doing the same thing week after week. If you have time one week and not the next, that's ok! We are hoping that many hands will make light work. We will try this method for taking care of the buildings for the next four months and then review if this is working or if we need to hire someone to clean the buildings for us.

Not sure where the supplies are? We'll help you find them! Ask Leslie or Pastor.

See supplies we are out of? Erica is taking care of ordering, please talk with her. Thank you all!



**Let's welcome Jennifer Andersen Markee as a Sunday worship leader!** Jennifer has assisted with our song leading during VBS over the years. Her son, Micah, is currently in confirmation. Now, we are excited to welcome her and her family to Mt Si and welcome Jennifer to a worship leadership role. Jennifer and Dave will both be playing during worship starting June 1st. Jennifer plays a number of instruments, but we'll start hearing the bass ukulele. Please welcome Jennifer and her family!

## An invitation to Stephen Ministry

### **WHO is a Stephen Minister and WHAT do they do?**

Stephen Ministers are laypeople who receive comprehensive training, equipping them to provide high quality Christian care to those in the congregation (or in the larger community) who are going through hard times. They are trained to listen, care, and be present for those who are struggling without judging, advising, pushing or trying to convert. Perhaps above all they learn to maintain confidentiality.

### **The Stephen Minister Training Course:**

Stephen Ministry is life-changing for those who take the Stephen Minister Training Course, as well as for those who receive care from a Stephen Minister. The curriculum is extremely relevant and the program dovetails well with many existing ministries within our local Lutheran churches.

1. The Stephen Minister Training Course consists of a minimum of 20 classes.
2. Classes occur weekly (with a few exceptions).
3. The Training Course will begin this October and end in March or April 2026.
4. The training schedule is in development.  
(We plan to coordinate with interested parties to put together the most convenient training schedule possible.)
5. The cost to attend the training is \$50 for materials.
6. The training is free!



The cost is low, and the impact is huge for those who take the course and the people whose lives we touch! **Please let Pastor Krista know if you are interested in taking the Stephen Minister Training Course at OSLC this fall.**

---

# 2025

# June

Sunday	Monday	Tuesday	Wednesday	Thursday	Friday	Saturday
1 Worship, 9:30am Noisy Offering <b>Bunco &amp; Burritos</b> 4-6:30 @ SALC AA, 6-9pm	2 <b>Pastor on Vacation</b> Quilters 9:00am	3 <b>Pastor on Vacation</b> Prayer Gathering PG, 9:30am	4 <b>Pastor on Vacation</b> GS 4115, 5-7pm	5 Farmers Market FM 4-8pm, Si View Park AA, 7-9pm	6	7 Men's Bible Study, 9am Little Si Rest.
<b>Pentecost</b> 8 Worship, 9:30am Sundae Sunday Fellowship & Garden Blessing AA, 6-9pm	9 Quilters 9:00am	10 PG, 9:30am	11	12 FM, 4-8pm AA, 7-9pm	13	14 Men's Bible Study, 9am Little Si Rest.  Daughters of Norway, 10-12pm
15 Worship, 9:30am  AA, 6-9pm	16 Quilters 9:00am	17 PG, 9:30am	18 GS 4115, 5-7pm	19 FM, 4-8pm GSSU, 6-9pm AA, 7-9pm	20	21 Men's Bible Study, 9am Little Si Rest.
22 Worship, 9:30am Special Offering for Backpacks AA, 6-9pm	23 <b>Tiny House Build 9-4pm</b> Quilters 9:00am	24 <b>Tiny House Build 9-4pm</b> PG, 9:30am	25 <b>Tiny House Build 9-4pm</b>	26 <b>Tiny House Build 9-4pm</b> FM, 4-8pm AA, 7-9pm	27 <b>Tiny House Build 9-4pm</b> SVFB Board Meeting	28 <b>Tiny House Build 9-6pm</b> Men's Bible Study, 9am Little Si Rest.
29 Worship, 9:30am  AA, 6-9pm	30 <b>Tiny House Build 9-4pm</b> Quilters 9:00am					

### June Monthly Gatherings

#### Daughters of Norway

Saturday, June 14, 10-12pm  
(2<sup>nd</sup> Saturday)

#### Girl Scout Service Unit (GSSU)

Thursday, June 19, 6-9pm  
(3<sup>rd</sup> Thursday)

#### SVFB Board Meeting

Friday, June 27, 12:30-2pm  
(4<sup>th</sup> Friday)

### June Weekly Gatherings:

#### Quilters

Mondays, 9:00am

#### Prayer Gathering (PG)

Tuesdays, 9:30am, in Prayer Room

#### Men's Bible Study

Saturdays, 9am, Little Si Restaurant

#### Girl Scout Troop (GS 4115)

1<sup>st</sup> & 3<sup>rd</sup> Wednesdays, 5-7pm in FH

#### Mountain Valley Preschool

M-F from 9-12

M, W, F from 1-4

#### AA

Thursdays from 7-9pm

Sundays from 6-8pm

Luther's Lounge

#### Farmer's Market (FM)

Thursdays, 4-8pm, Si View Park